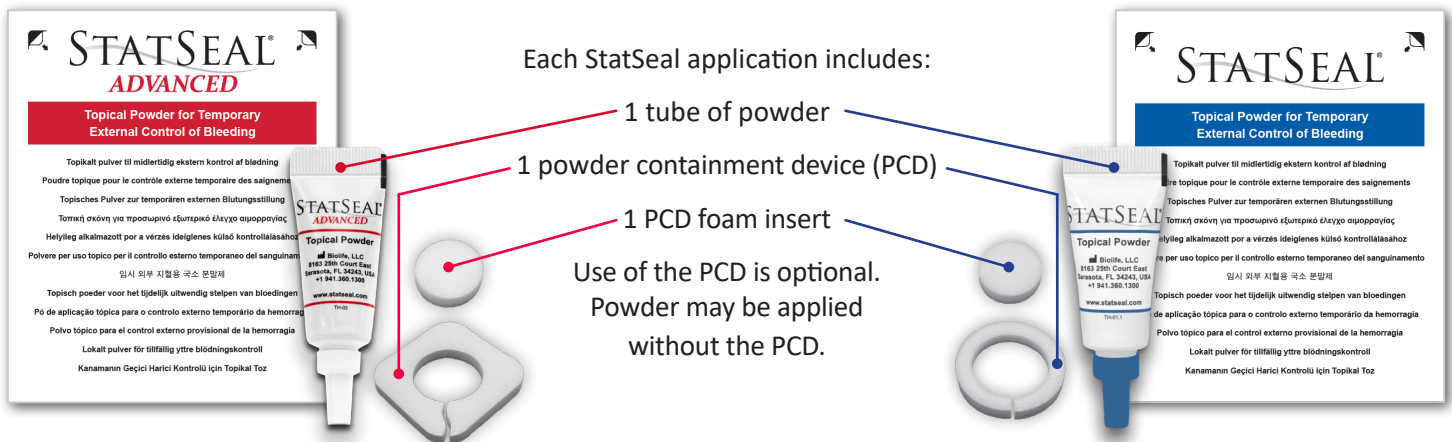


STATSEAL POWDER & STATSEAL ADVANCED POWDER

Powder Application Guidelines

The following powder application guidelines are based on compilation of best practices and can be adapted to your specific application or facility protocol. StatSeal is intended for use under the care of a healthcare professional for the temporary external control of bleeding wounds and procedures.



**Pour powder 360°
around catheter.**

Ensure powder completely
surrounds the site.



**Hold pressure for a
minimum of 2 minutes.**

No peeking! Time it! **Extend
pressure times as clinically necessary.**



**Place transparent
dressing.**

Leave powder in place until the
scheduled dressing change.



STATSEAL POWDER & STATSEAL ADVANCED POWDER

Powder Removal Guidelines

The following powder removal guidelines are based on compilation of best practices and can be adapted to your specific application or facility protocol.

1

Remove transparent dressing.

After dressing removal, use dry, sterile gauze to gently brush away any loose StatSeal particles.

2

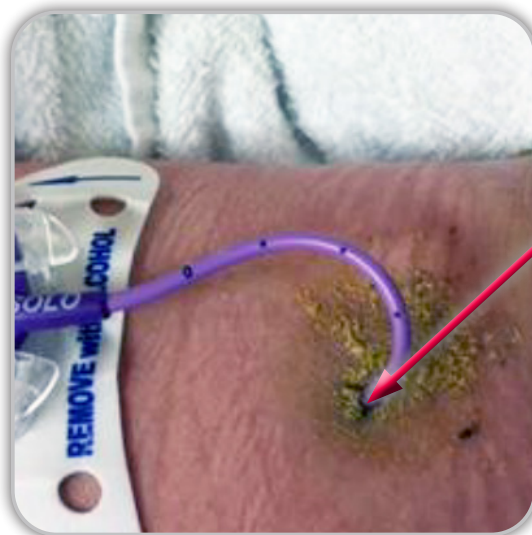
Clean around site. **Do not disrupt seal.**

Seal should remain when cleaning. Part of seal may come off when cleaning; do not scrub to remove.

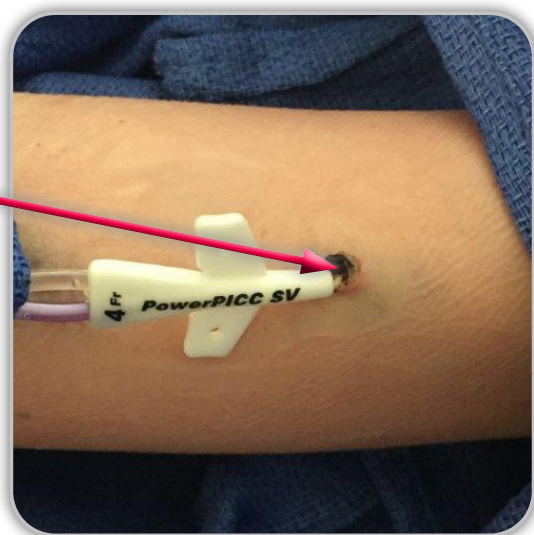
3

Apply new transparent dressing.

Reapplication of powder is **ONLY** needed if seal has been disrupted and bleeding or oozing occurs.



Loose StatSeal remains after dressing removal



Seal remains at insertion site after cleaning

NOTE:

StatSeal has no interaction with CHG. The seal falls off naturally over time with subsequent dressing changes. For catheter removal, moisten dry seal with sterile water/saline to loosen seal.

BIOLIFE®

Biolife, LLC, maker of StatSeal® products